

---

---

## Using AppDeploy to Create GPO Friendly Installers

---

---

The purpose of this document is to walk the user through the process of creating a simple .msi installer package of a program that allows the C:\Program Files\program folder to be copied and pasted to a new location after installation.

**NOTE: These instructions will not work for a program that requires more than the C:\Program Files\program folder to be copied.**

1. Setup a Clean Machine with AppDeploy installed (see best practices video for requirements)
2. On a separate machine install the program you want to create an .msi for
3. Copy the C:\Program Files\\*Program Name\* folder
4. Paste the folder into a network share accessible on your AppDeploy machine
5. Ensure the AppDeploy machine is clean
  - a. Run Disk Cleanup
  - b. Run CCleaner
    - i. Run cleaner
    - ii. Run and Fix all Registry errors
6. Run AppDeploy on Clean Machine
7. Click Next
8. Select the "Create and MSI setup based on system changes shown in Figure 1 below

Figure 1

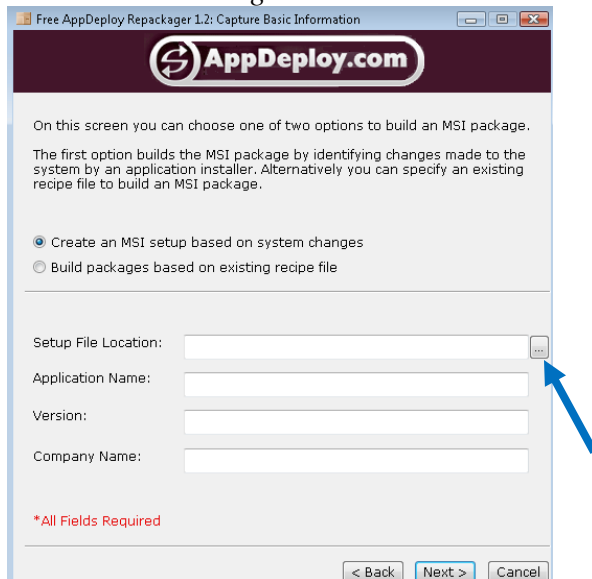
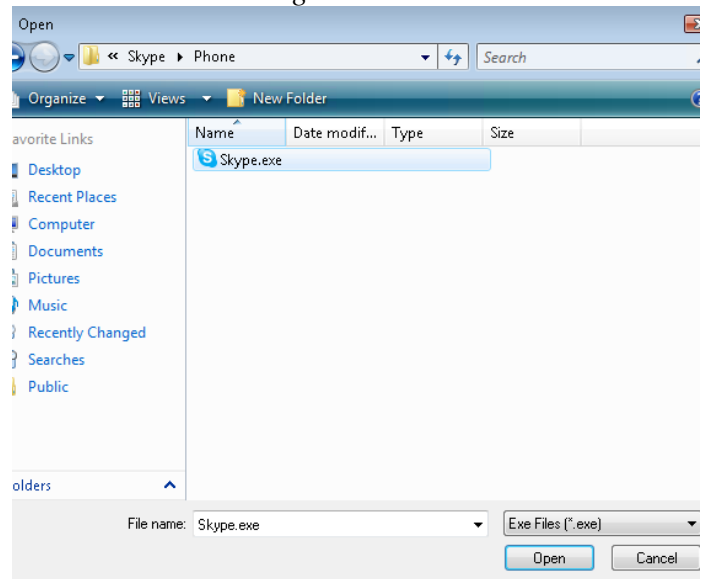


Figure 2



9. In the Setup File Location click the Browse Button indicated by the blue arrow in Figure 1 above
10. Locate and select the .exe file in the location you pasted on your network from step 4. See figure 2 above
11. Click Open

Figure 3

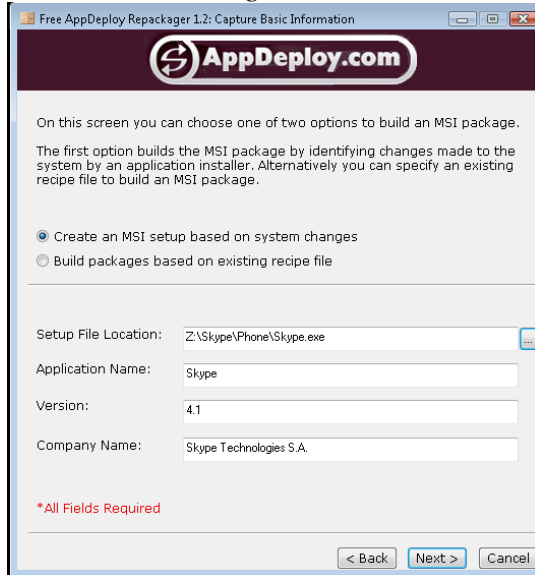


Figure 4



**Note: Ensure the Application Name field is how you want the program to be named and make sure there are entries for all fields. Some programs it will automatically complete and others will not.**

12. Click Next (See Figure 3 above)
13. Click the Advanced button (See Figure 4 above)

Figure 5

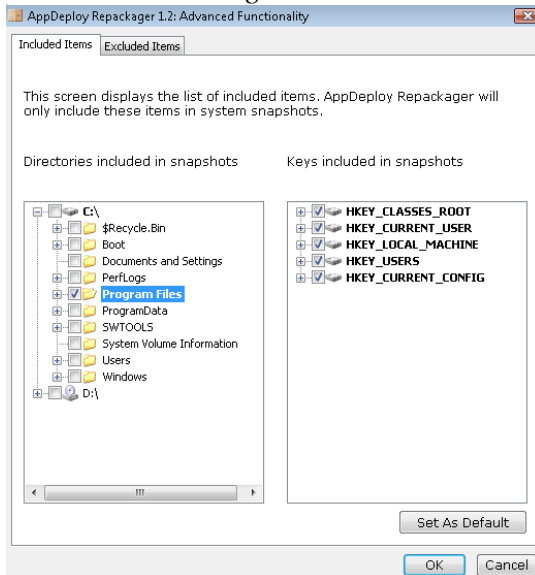
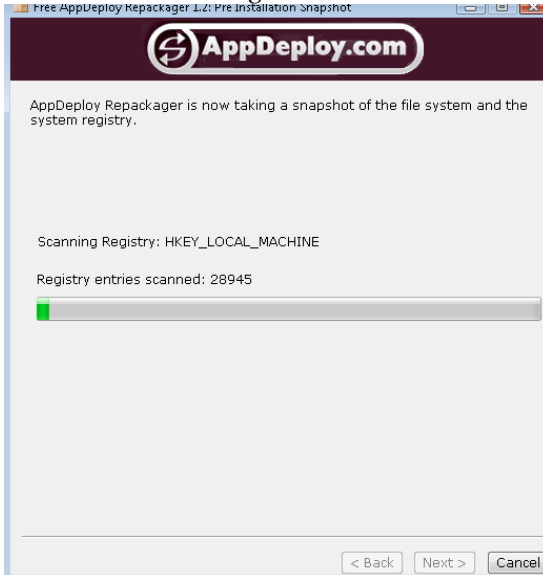


Figure 6



14. Uncheck everything in the left side of the screen except for the C:\Program Files (See Figure 5 above)
  - a. We will be copying the program folder to the C:\Program Files directory later

## TechChucker's Brain Blast

---

15. Click the OK button
16. This will bring you back to a screen similar to Figure 4 above
  - a. *The Directories section should have C:\Program Files\ now*
17. Click the Next Button
18. You should see a screen similar to Figure 6 above
  - a. This screen may take a few minutes depending on the size of your C:\Program Files and Registry
19. You should now see a screen similar to Figure 7 below

Figure 7

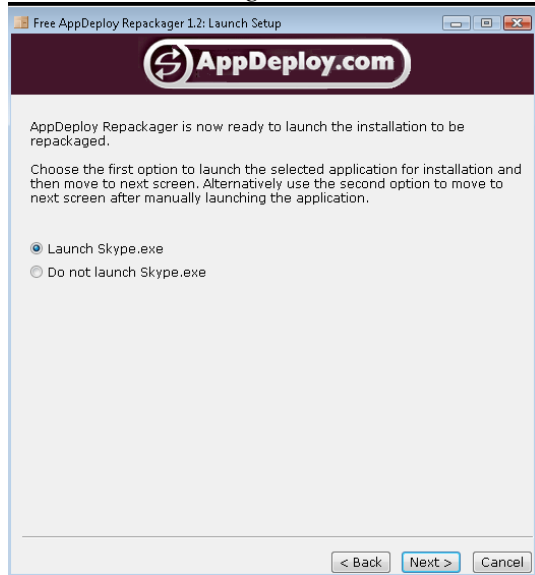
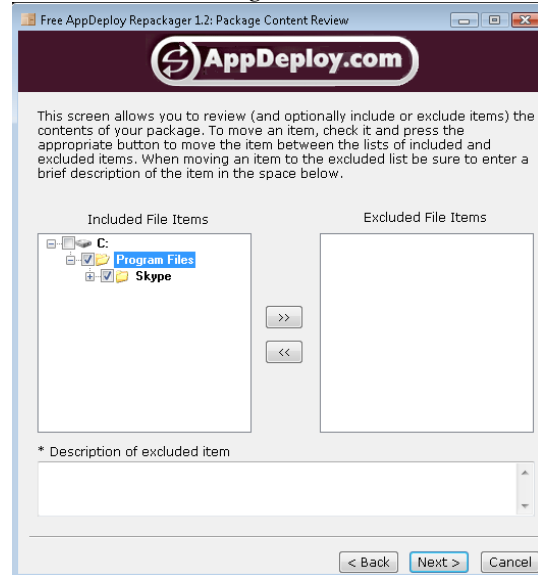


Figure 8



20. Open the My Computer or Computer icon and go to the network location you saved your program to from step 4
21. Copy the program folder (in this instance I have copied a folder on my Z:\ drive called Skype)
  - a. *This folder should be the entire contents of the installed program that you copied from the C:\Program Files directory on your other computer*
22. Now go to the C:\Program Files directory on your AppDeploy computer and Paste the program file (Skype folder) into C:\Program Files
  - a. *In this instance you would now have a new folder at C:\Program Files\Skype with all the Skype files inside*
23. Close all windows except the one shown above in Figure 7
24. Make sure the Launch \*Program Name\*.exe is selected and Click Next
25. Allow the program to run
26. When satisfied the program works close it
  - a. **NOTE: When running a program like Skype you need to ensure it fully closes. Skype doesn't close until you right click the icon in the taskbar and choose exit. AppDeploy will not continue until it is not running.**
27. You should now see a screen similar to Figure 4 above again.
28. Click Next
29. Now you will see a screen similar to Figure 6 above again

# TechChucker's Brain Blast

- a. You are seeing these screens twice because the first time the program takes a snapshot of your system without the program. The second time it takes a snapshot with the changes and compares the two snapshots.
  - b. This is what is used to determine the package.
30. You should now see a screen similar to Figure 8 above
31. Check only the C:\Program Files\Skype folder
32. Click Next

Figure 9

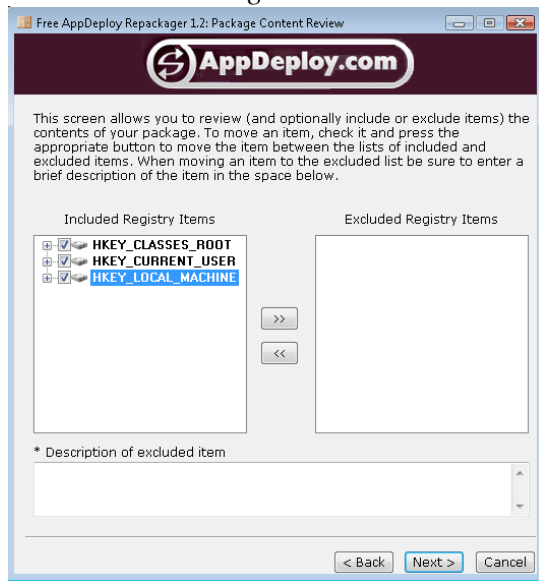


Figure 10



33. In this instance you can select all items (See Figure 9 above)
34. Click Next
35. Click the drop down and select the program executable (See Figure 10 above)
36. Click the Select button

Figure 11

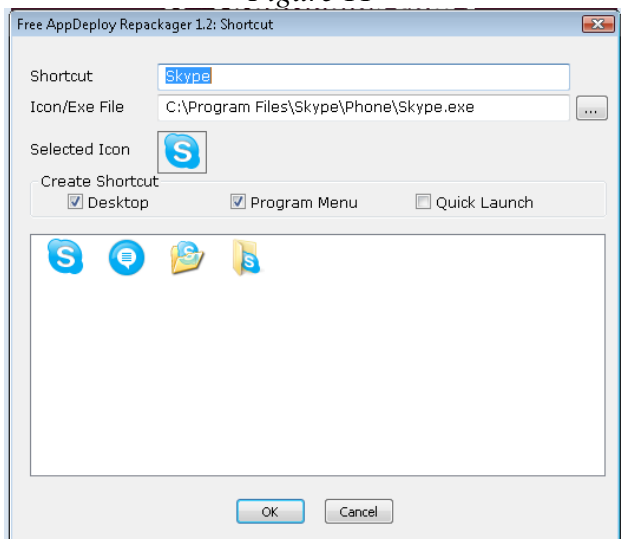
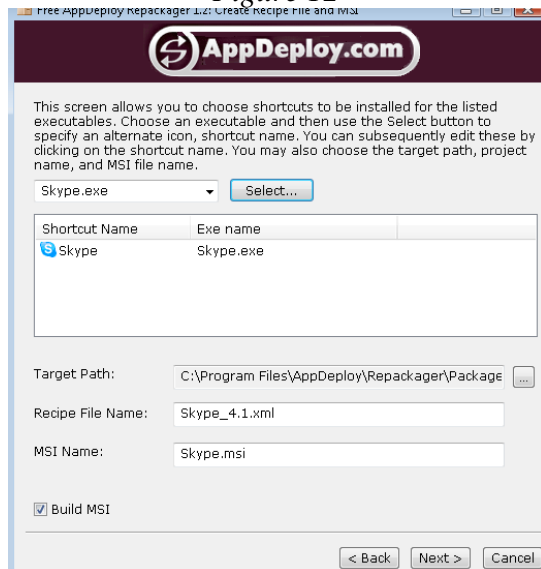


Figure 12



## TechChucker's Brain Blast

---

37. Ensure the Shortcut is named what you want and determine if you want a shortcut in the following locations (*See Figure 11 above*)
  - a. Desktop
  - b. Program Menu
  - c. Quick Launch
38. Click Ok
39. Figure 12 shows the final screen where you can determine the name of the .msi
  - a. Ensure this is correct before proceeding
40. Click Next
41. Click Finish
42. The new MSI file is stored at:
  - a. C:\Program Files\AppDeploy\Repackager\Packages\filename.msi

**MAKE SURE YOU TEST THE MSI FILE ON A MACHINE TO ENSURE ALL FEATURES WORK.**

**TEST TO ENSURE YOU CAN COMPLETELY UNINSTALL VIA ADD/REMOVE PROGRAMS BEFORE DEPLOYING SYSTEM WIDE.**